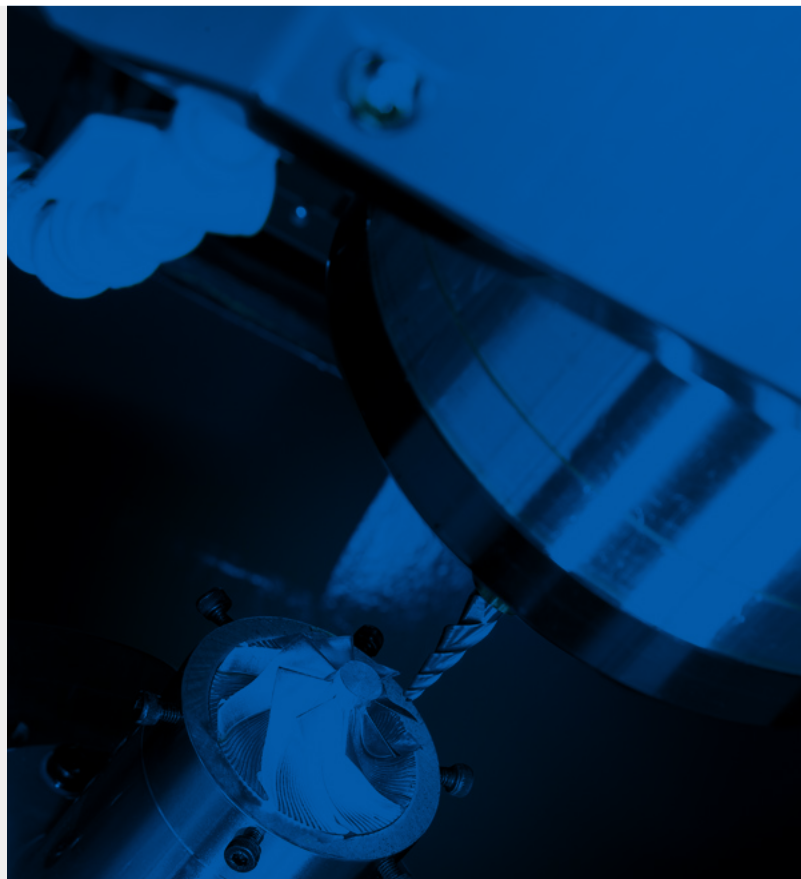


ULTRA-HIGH-SPEED, HIGH-PRECISION VERTICAL
MACHINING CENTER EQUIPPED WITH LINEAR MOTORS

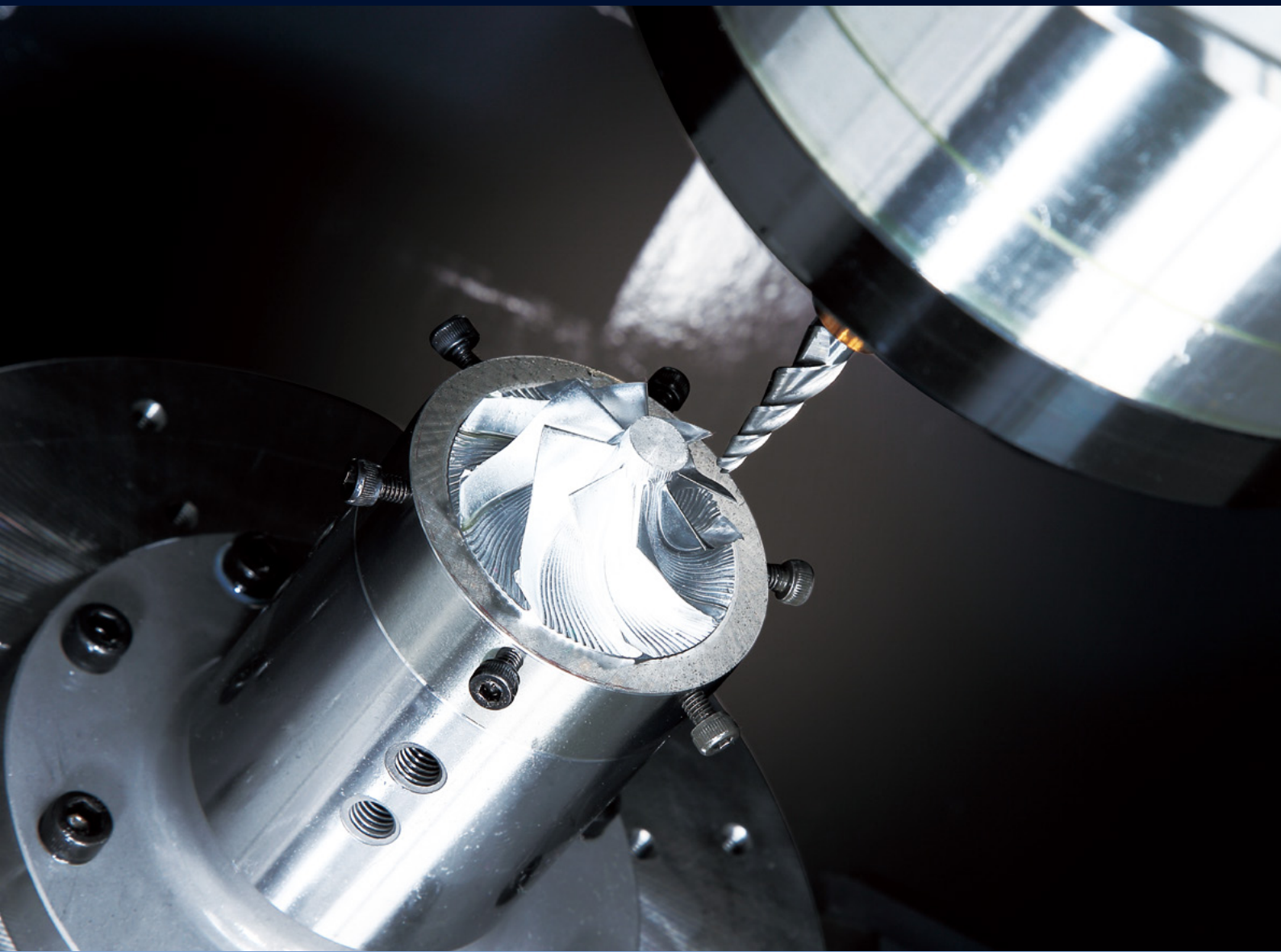
FM 200/5AX



FM 200/5AX

The FM 200/5AX offers super-fast traveling and great reliability with its high-speed spindle and linear axes driven by linear motors, in addition to excellent stability in cutting operation due to the adoption of anti-vibration materials.





STABLE BED AND STRUCTURE DESIGN

Stable cutting based on anti-vibration materials and symmetrical gantry structure.

STABLE CUTTING BASED ON ANTI-VIBRATION MATERIALS AND SYMMETRICAL GANTRY STRUCTURE

Outstanding productivity and cutting accuracy are delivered with 42,000 rpm spindles, linear motors, and direct-drive motors.

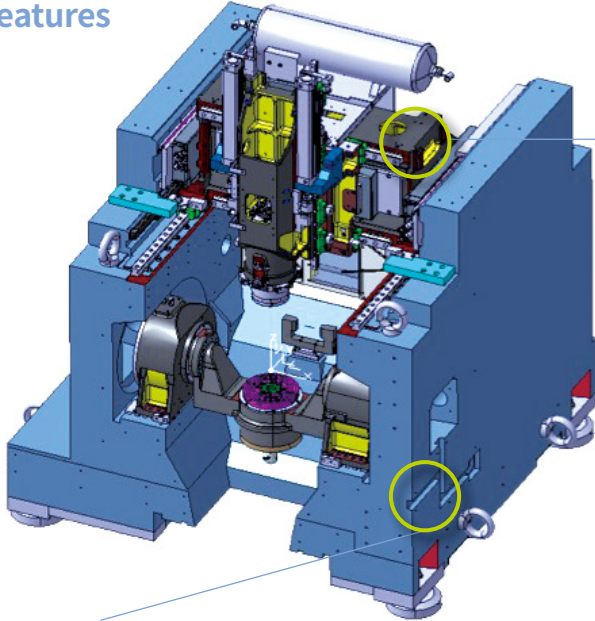
HEIDENHAIN CONTROLLER FOR MAXIMUM RELIABILITY

The adoption of Heidenhain controllers optimized for high-speed processing enhances machine reliability, visibility, and display applicability.

BASIC STRUCTURE

Stable cutting based on symmetrical gantry structure and antivibration materials (mineral casting).

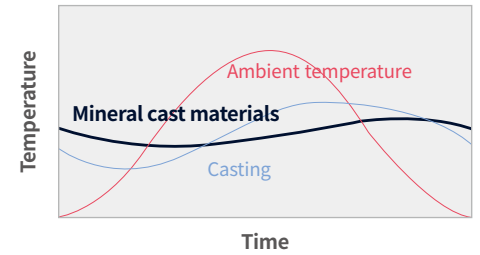
Structural and material features



Gantry structure

Horizontally-symmetrical structure suitable for high-speed, high-precision machining
Guaranteed structural stability

Built with a mineral cast bed for stable performance

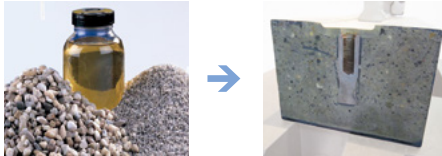


Normal cast materials

Mineral cast materials

↑ **25 times**
Thermal stability
25 times greater

Built with a mineral cast bed for stable performance



AXIS SYSTEM

The linear axes and rotary axes deliver high speed and superior accuracy.

Rotary axes equipped with direct drive motors*

The rotary table is equipped with a direct drive motor for rapid rotation coupled with rapid acceleration and deceleration. Thermal error is minimized by the water cooling system.

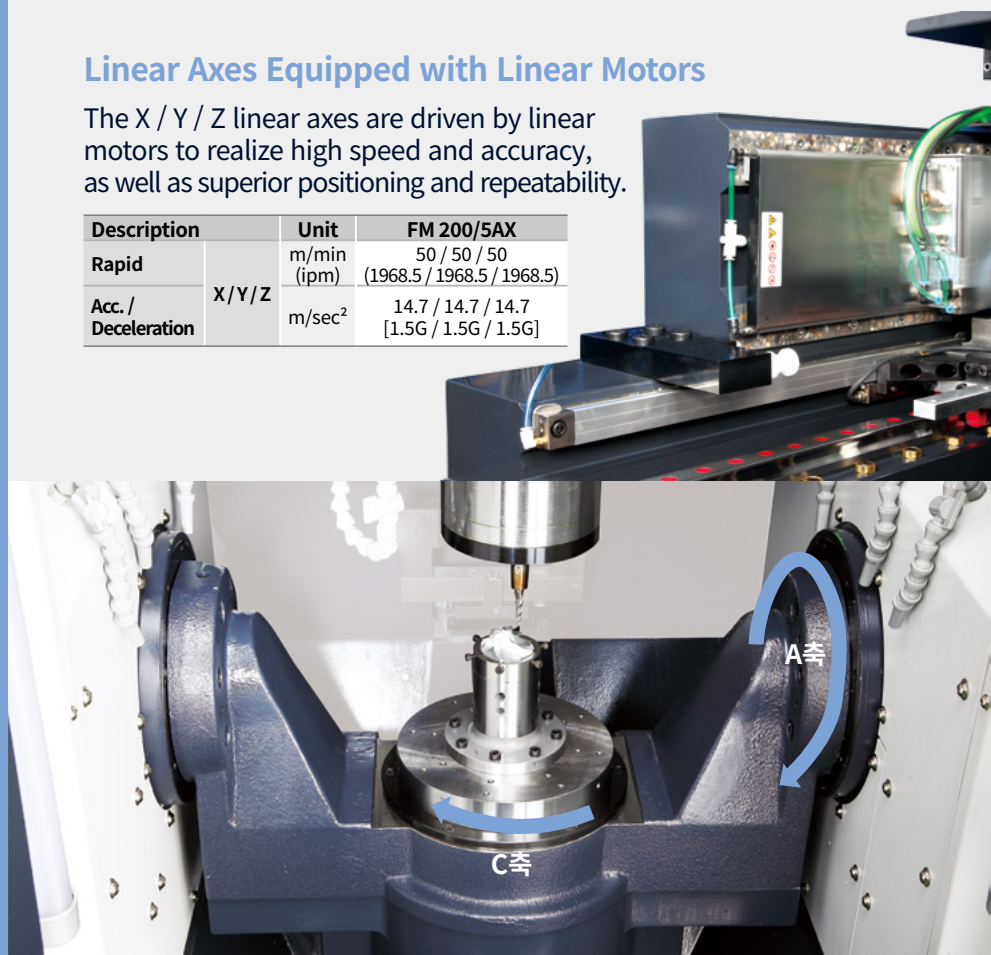
Description	Unit	FM 200/5AX
Rapid	A/C	r/min 100 / 200
Travel		deg 140 / 360
Load Capacity	kg (lb)	15 (33.1)

* For 5 axes only.

Linear Axes Equipped with Linear Motors

The X / Y / Z linear axes are driven by linear motors to realize high speed and accuracy, as well as superior positioning and repeatability.

Description	Unit	FM 200/5AX
Rapid	X/Y/Z	m/min (ipm) 50 / 50 / 50 (1968.5 / 1968.5 / 1968.5)
Acc. / Deceleration		m/sec ² 14.7 / 14.7 / 14.7 [1.5G / 1.5G / 1.5G]



SPINDLE

One of the highest-speed spindles in its class, the ultra-high-speed enhances productivity and machining accuracy.

Ultra-high-speed spindle

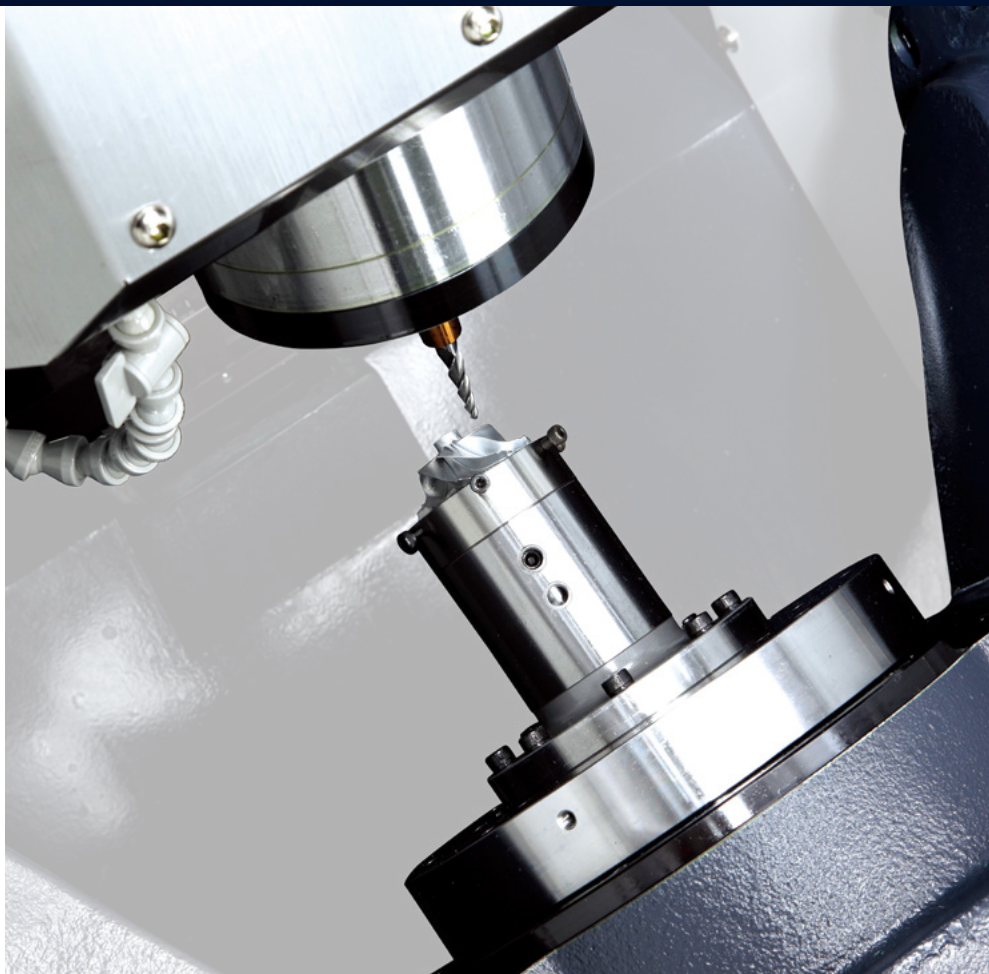
The spindle provides incomparably high productivity and machining accuracy.

Spindle speed (HSK-E40)

42000 r/min

Spindle motor

14.5 kW
19.4 Hp



MAGAZINE

The machine's structure has been simplified with the addition of a directdrive motor, while the operator's convenience has been enhanced by manual magazine operation for tool storage.

* FM 200/5AX model.
No of tool

24 ea

Max tool diameter

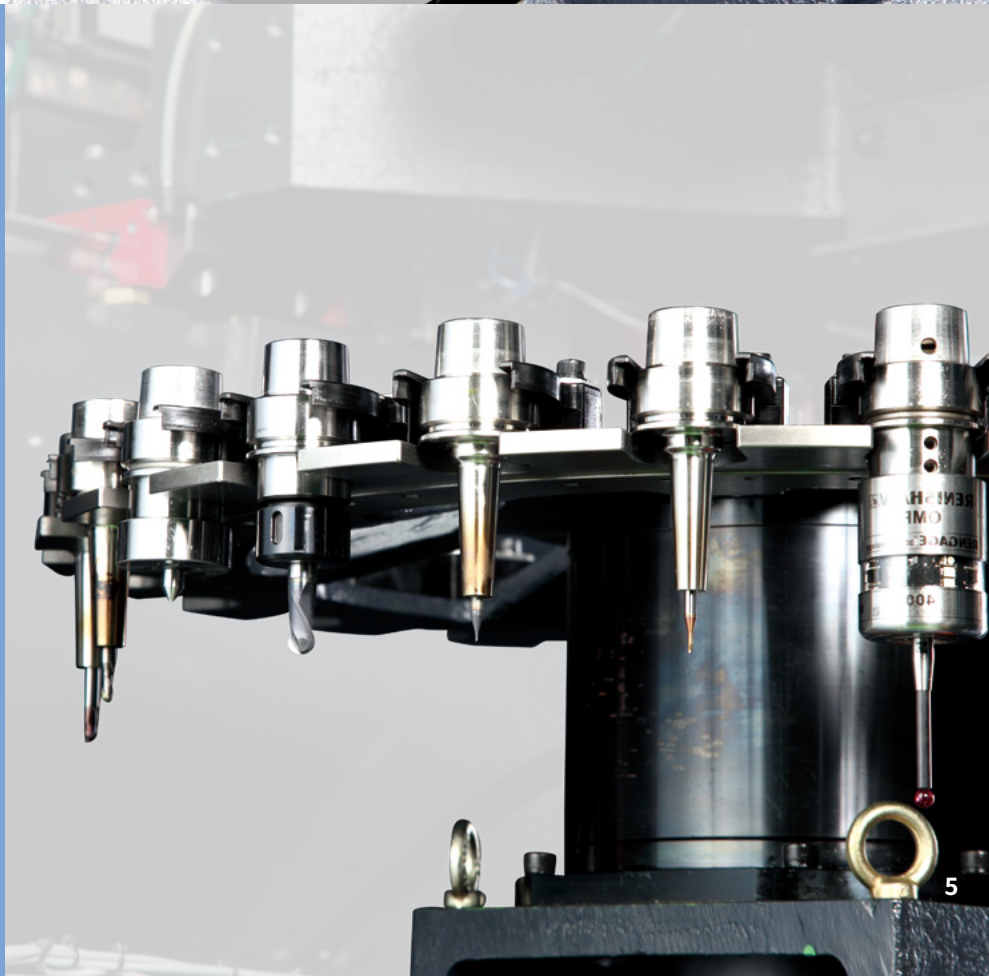
50 mm 2.0 inch

Max tool length

180 mm 7.1 inch

Tool change time

4.0 s



STANDARD | OPTIONAL SPECIFICATIONS

A range of options is available to suit individual requirements.

Description	Features		FM200/5AX	
Spindle	42000 r/min (Built-in)		●	
Tool magazine	장비 부착형	24 tools	●	
Tool shank type	HSK E40		●	
Coolant	FLOOD	1.1kW,1.0MPa	●	
	SHOWER		○	
	TSC	4.0kW,2.0MPa,Cyclone filter	○	
	OIL SKIMMER		○	
	Coolant level switc		○	
	Coolant chiller		○	
Chip disposal	Chip pan		●	
	Chip conveyor	Scraper Drum filter type/Right side	○	
	Chip bucket	folklift type, 300L	○	
		Rotation type, 300L	○	
	Air blower		○	
	Air gun		○	
	Coolant gun		○	
	Paper filter		○	
Mist collector	Water soluble	○		
	None water soluble	○		
Rotary table	Air clamping	A/C-axis	●	
	Rotary joint	Hyd. Fixture line thru table center(Max.2 port)	○	
	Fixture interface	1AB + AIR BLOW (for Impeller)	○	
Accuracy	Structure Smart Thermal Control	Spindle	●	
	Linear scale	X/Y/Z-axis	●	
	Rotary encoder	A/C-axis	●	
Measurement	IKC-READY	S/W ONLY	●	
		RENISHAW (OMI-2C)+S/W	○	
	Auto tool length measurement	Laser type	NT-2 BLUM	●
	Auto workpiece measurement	NONE	●	
		OMP400 RENISHAW	○	
	DATUM BALL FOR IKC	NONE	●	
		DATUM BALL D25	○	
	MASTER TOOL	NONE	●	
MASTER TOOL		○		
Automation	Gantry Loader		○	
	AUTO DOOR	With safety edge	○	
		for Gantry Loader	○	
Others	LED work light		○	
	Signal tower		○	
	Electric cabinet cooling	Air Conditioner	●	
	Auto power cut-off		○	
	공구 부하 모니터링 시스템		○	

* Please contact your DN Solutions representative for detailed machine information.

* When using a semi-synthetic type or synthetic type, contact our sales representative or service center in advance.:

** Technical consultation is mandatory for the chilling of non-water soluble coolant

● Standard ○ Optional X Not applicable



There is a high risk of fire when using non-water-soluble cutting fluids, processing flammable materials, neglecting the controlled and careful use of coolants and modifying the machine without the consent of the manufacturer. Always check the SAFETY GUIDELINES carefully before using the machine.

PERIPHERAL EQUIPMENT

Various solutions are available for better machining performance and higher-quality.

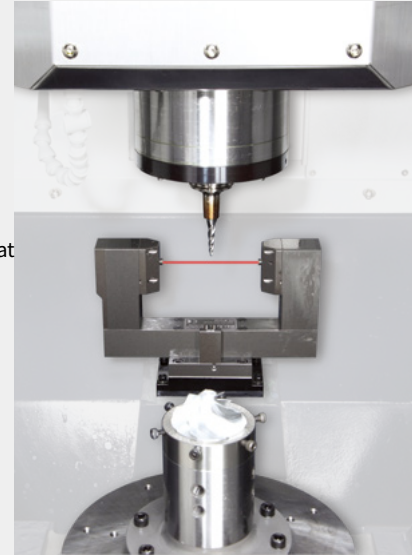
Convenient operation panel

The ergonomically-designed Heidenhain operation panel and 19-inch large screen enhance the operator's convenience.



Tool length measurement device

The standard tool length laser measuring device secures the highest degree of accuracy even at super-high-speed operation. (The touch probe is optional.)



Roller LMG

The roller-type LM Guideway has been adopted to ensure excellent rigidity and accuracy of the linear travel axes.



Linear scale (standard for all axes)

All axes are equipped with the linear scale as a standard feature to maintain the highest degree of accuracy over many hours of operation.



Gantry loader OPTION

Information on detailed specifications required prior to ordering.



OMP 400 OPTION

FM 200/5AX implementation



Recommendations for machine operation

Unlike ball-screw-type machines, a water chiller is used to cool down the linear motors and direct-drive motors. As such, the machine is sensitive to the control temperature of the chiller. Since the water chiller is controlled according to the ambient temperature, machine accuracy can be maintained and guaranteed in a constant temperature environment.

- Recommended operating conditions: Ambient temperature: $20 \pm 1.5^\circ\text{C}$, Temperature change: 0.4°C/hr or less, $\pm 1.5^\circ\text{C/24hr}$, Relative humidity: 20~80%

CONVENIENT OPERATION

HEIDENHAIN TNC7

Visualized, intuitive task support, customized UI

The TNC7 makes machining even easier, for everything from programming to program validation and from machine setup to actual machining. You intuitively operate highly complex applications directly on the touchscreen with various integrated solutions for standard tasks.

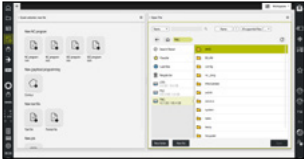
TNC7 **NEW**

- 24 inch touch screen
- 189GB Program memory
- Look-ahead 5000 blocks
- Touch Probe Cycles Graphical Programming



<TNC7>

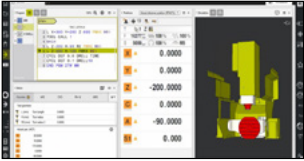
Conversational convenient function



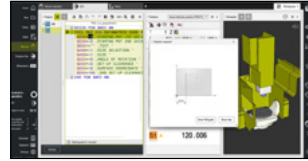
Data are controlled in the folder structure; convenient communication via USB devices



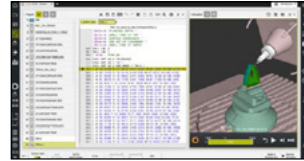
KinematicOpt & KinematicComp **option**
(Touch probe cycle for automatic measurement)



Collision protection system **option**



Various built-in pattern cycles for a wider scope of application (Software standard)



Graphic simulation



Enhanced collision protection function DCMv2 **option**



Improved maintenance environment



Highly practical programming and setup based on touch operation

NUMERIC CONTROL SPECIFICATIONS



HEIDENHAIN

Item		Specifications	TNC7
Controlled axis	Controlled axis		5 (X,Y,Z,C,A)
	Simultaneously controlled axis		5 axes
Interface function	Embedded ethernet		●
	USB interface (USB 2.0)		●
Feed function	Look-ahead	5000 blocks	●
Axis compensation	KinematicsOpt	Automatic measurement and optimization of machine kinematics	●
Collision monitoring	Dynamic collision monitoring (DCM)		○
Network	MT Connect		⊗
Others	Display unit	touch panel	24"
	Program memory for NC programs		189GB

● Standard ○ Optional ✕ Not Available ⊗ Available

POWER | TORQUE

HEIDENHAIN

Max. spindle speed : **4200** r/min

Max. power: **14.5** kW
19.4 Hp

Max Torque: **9.36** N·m
6.9 ft-lbs

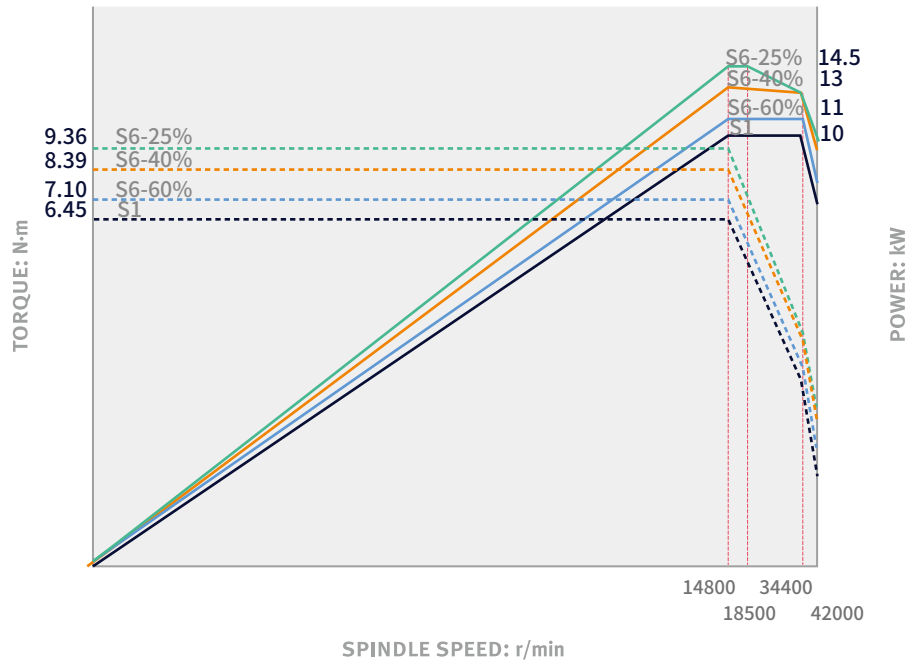
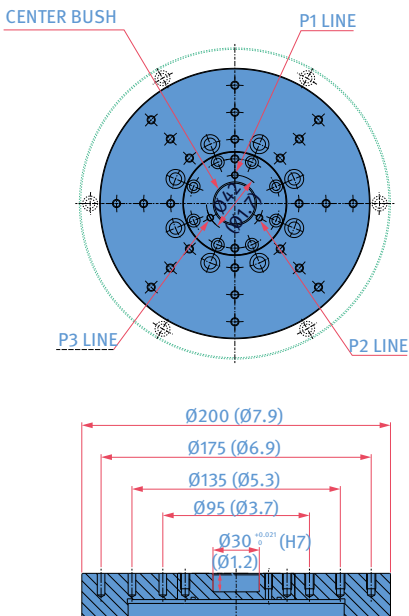
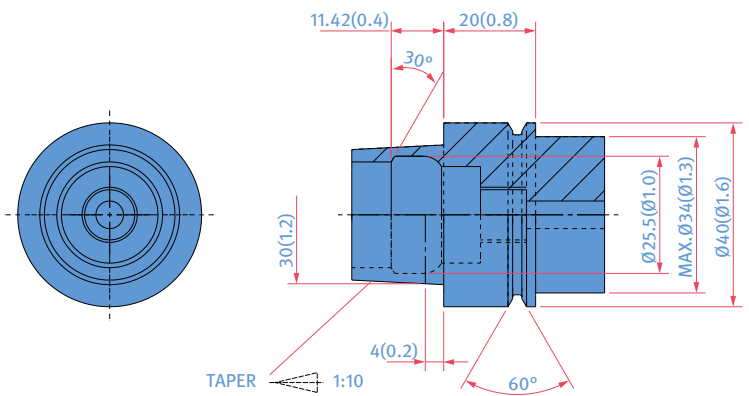


TABLE DIMENSIONS | TOOL SHANK

Table dimensions



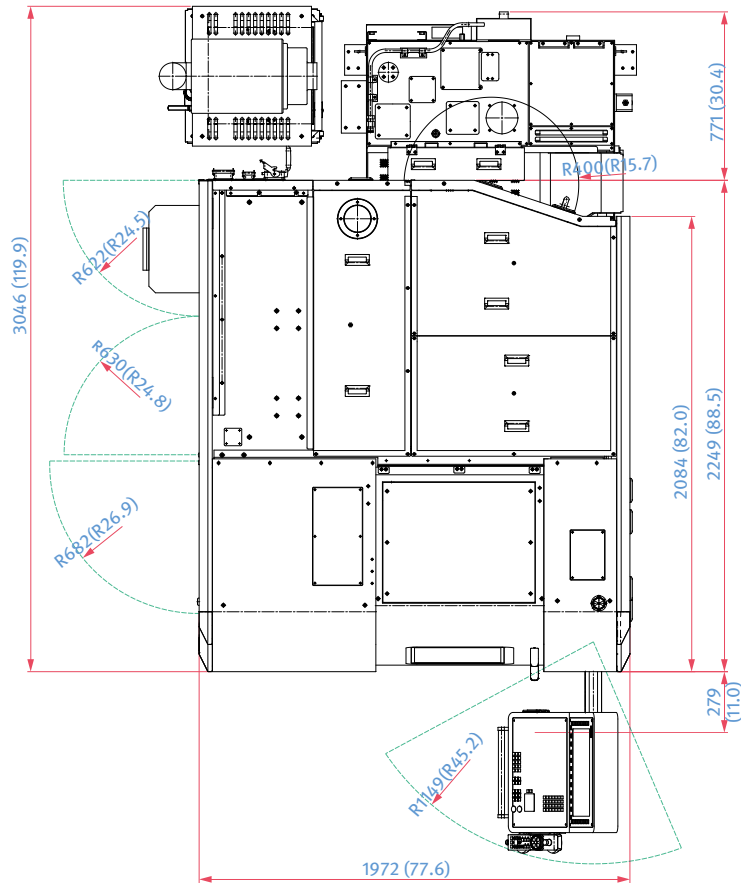
Tool shank (HSK-E40)



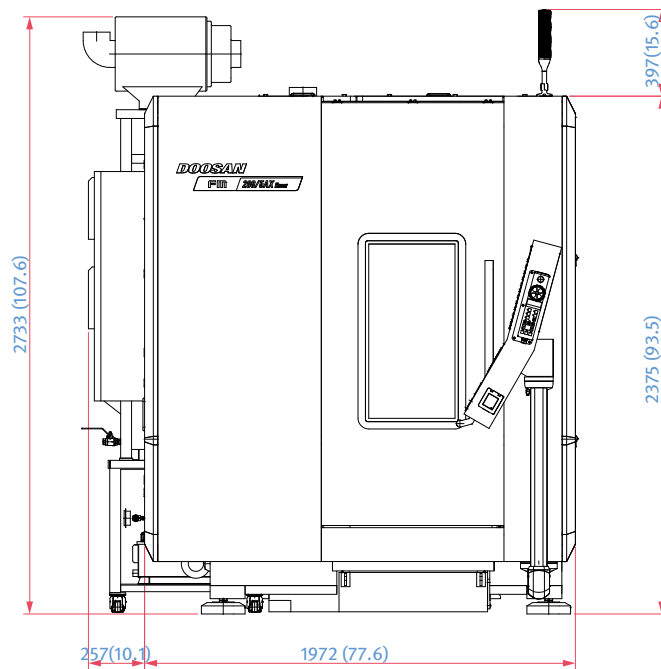
EXTERNAL DIMENSIONS

Unit: mm (inch)

TOP



FRONT



MACHINE SPECIFICATIONS

Description		Unit	FM 200/5AX	
Travel	Travel distance	X-axis	mm (inch)	200 (7.9)
		Y-axis	mm (inch)	340 (13.4)
		Z-axis	mm (inch)	300 (11.8)
		A-axis	deg	140 (-10 ~ +130)
		C-axis	deg	360
	Distance from spindle center to table top		mm (inch)	110~410 (4.3~16.1)
	Distance from spindle center to column		mm (inch)	230 (9.1)
Feed rate	Rapid traverse rate	X-axis	m/min (ipm)	50 (1968.5)
		Y-axis	m/min (ipm)	50 (1968.5)
		Z-axis	m/min (ipm)	50 (1968.5)
		A-axis	r/min	100
		C-axis	r/min	200
	Cutting feed rate		m/min (ipm)	20 (787.4)
Table	Table size		mm (inch)	∅ 200 (∅ 7.9)
	Loading capacity		kg (lb)	15 (33.1)
Spindle	Max. spindle speed		r/min	42000
	Spindle taper		-	HSK E40
	Max. spindle torque		N·m (ft-lb)	9.36 (6.9)
Automatic tool changer	Tool shank type		-	HSK E40
	Tool storage capacity		ea	24
	Max tool diameter		mm (inch)	50 (2.0)
	Max. tool length		mm (inch)	180 (2.9)
	Max. tool weight		kg (lb)	1 (2.2)
	Tool selection		-	FIXED
	Tool change time (tool to tool)		s	4.0
	Tool change time (chip to chip)		s	6.0
Motor	Spindle motor power		kW (Hp)	14.5 (19.4)
	Coolant pump motor power		kW (Hp)	1.1 (1.5)
Power Source	Power consumption		kVA	66.4
	Compressed air pressure		MPa (psi)	0.54 (78.3)
Tank Capacity	Coolant tank capacity		L	310
	Lubricant tank capacity		L	5
Tank Capacity	Height		mm (inch)	2375 (93.5)
	Length		mm (inch)	2249 (88.5)
	Width		mm (inch)	1972 (77.6)
	Weight		kg (lb)	7000 (275.6)
Controller		-	HEIDENHAIN iTNC 640	

Recommended operating conditions : Ambient temperature: 20 ± 1.5°C
 Temperature change: < 0.4°C/h < ±1.5°C/24h
 Relative humidity: 20~80%

Cover All Possibilities

The powerful and versatile 5-axis machine lineup at DN Solutions is an unbeatable option for machine shops that want to enjoy limitless part-making possibilities.

DNM / 5AX series

The perfect entry into 5-axis machining. Compact, productive and built off the classic DNM architecture.



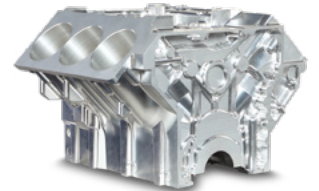
DVF series

With cutting-edge technology and an automation-ready framework, this machine elevates your 5-axis capability.



VCF 850SR/LSR

Our traveling column vertical machining center with a rotating B-axis spindle head and C-axis table is a fantastically flexible way to get more 5-axis production out of a single machine.



FM / 5AX series

Our ultra high speed and ultra precise linear motor series. 42000 r/min spindle speed with outstanding accuracy.



DHF series

A powerful twin-pallet machine for larger, complex parts. Handle those big parts with maximum efficiency.



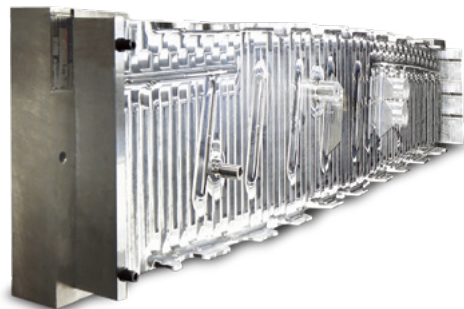
BM U series

An accurate and rigid bridge mill VMC. Capably handles the biggest parts for the biggest industries—aerospace, construction, oil/gas and more.



HFP series

A 5-axis super high performance machine for your larger aluminum structural components with 5 kW, 30000 r/min spindle.



The DN Solutions promise, MACHINE GREATNESS, has two important meanings. The first is simple: DN Solutions makes great machines. The second is a challenge to our end-users. With a product line that is this comprehensive, accurate and reliable, we equip our customers to machine greatness. The big question: ***Why should you choose DN Solutions over other options?***

Here's why...



**MACHINE
GREATNESS™**



WHAT YOU MAKE AND HOW YOU MAKE IT MATTERS—SO MAKE IT
GREAT WITH DN SOLUTIONS.

UNBEATABLE MACHINES

You won't find a more comprehensive range or a better combination of value, performance and reliability anywhere else.

ROBUST PRODUCT LINE

We offer an impressive range of machine models and hundreds of configurations. Whatever your machining needs and requirements, there's a DN Solutions for you.

READILY AVAILABLE - ANYWHERE IN THE WORLD

Machining centres (including 5-axis machines), lathes, multi-tasking turning centres and mill-turn machines, and horizontal borers with best-in-class specifications are all available...ready to install.

EXPERT SERVICE

Our dedicated, experienced and knowledgeable team is totally committed to improving your productivity, growth and success.

RESPONDING TO CUSTOMERS **ANYTIME, ANYWHERE**

DN Solutions Global Network

66 Countries

140 + Sales networks

3 Factories

6 Regional HQs



CUSTOMER SUPPORT AND SERVICES

We're there for you whenever you need us.

We help our customers operate at maximum efficiency by providing them with a range of tried, tested and trusted services - from pre-sales consultancy to post-sales support.



Field services

- On-site service
- Machine installation and testing
- Scheduled preventive maintenance
- Machine repair service



Parts supply

- Supplying a wide range of original DN Solutions spare parts
- Parts repair service



Training

- Programming, machine setup and operation
- Electrical and mechanical maintenance
- Applications engineering



Technical support

- Supports machining methods and technology
- Responds to technical queries
- Provides technical consultancy

**Head Office**

19F, 10, Tongil-ro, Jung-gu, Seoul,
Republic of Korea, 04527

Tel: +82-2-6972-0370
Fax: +82-2-6972-0400

DN Solutions America

360 E State PKWY,
Schaumburg, IL. 60173,
United states

Tel: +1-315-265-7500

DN Solutions Europe

Emdener Strasse 24, D-41540
Dormagen, Germany

Tel: +49-2133-5067-100
Fax: +49-2133-5067-111

DN Solutions India

No.82, Jakkuar Village
Yelahanka Hobil,
Bangalore-560064

Tel: +91-80-2205-6900
E-mail: india@dncompany.com

DN Solutions China

Room 101,201,301,
Building 39 Xinzhuan Highway
No.258 Songjiang District
China Shanghai (201612)

Tel: +86 21-5445-1155
Fax: +86 21-6405-1472

DN Solutions Vietnam

M.O.R.E building 2F, 40A-40B Ut
Tich Street, 04 Ward 04,
District Tan Binh District,
Ho Chi Minh City, Vietnam
Tel: +84 28-7304-0163

DN Solutions Mexico

Avenida Parque Bicentenario
#100 Nave M65L3-6,
Fraccionamiento San Isidro
Business Park,
Santa Rosa Jauregui,
Querétaro, México

E-mail: efrain.figueroa@dncompany.com

Sales inquiry

sales@dncompany.com