

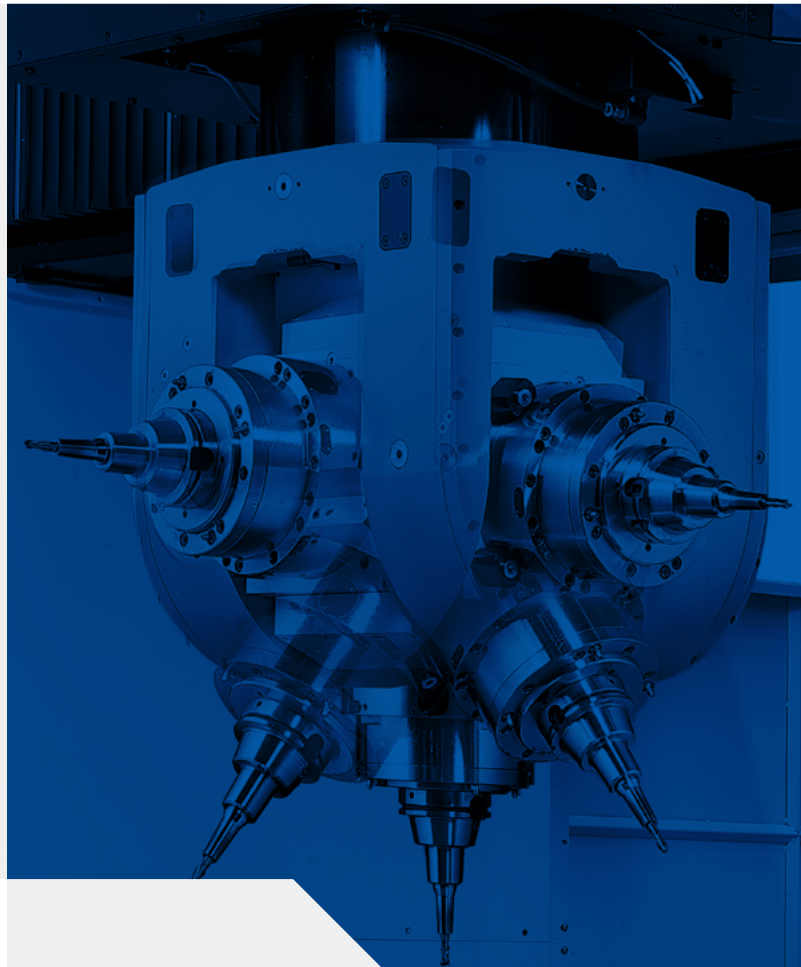
MULTI-PURPOSE DOUBLE COLUMN  
MACHINING CENTER WITH UNIVERSAL HEAD

# DBM-U series

**DBM** 2030U/2040U

**DBM** 2540U/2550U

**DBM** 3050U



# BASIC STRUCTURE

DBM machines are large, multi-purpose double column machining centers designed for applications that include the heavy-duty machining of large parts and high precision dies and molds. With the highest technical specifications in its class, the DBM series provides customers with an extensive range of machining capabilities and functions to help them improve their productivity and performance.

## X x Y x Z axes travel

### X-axis

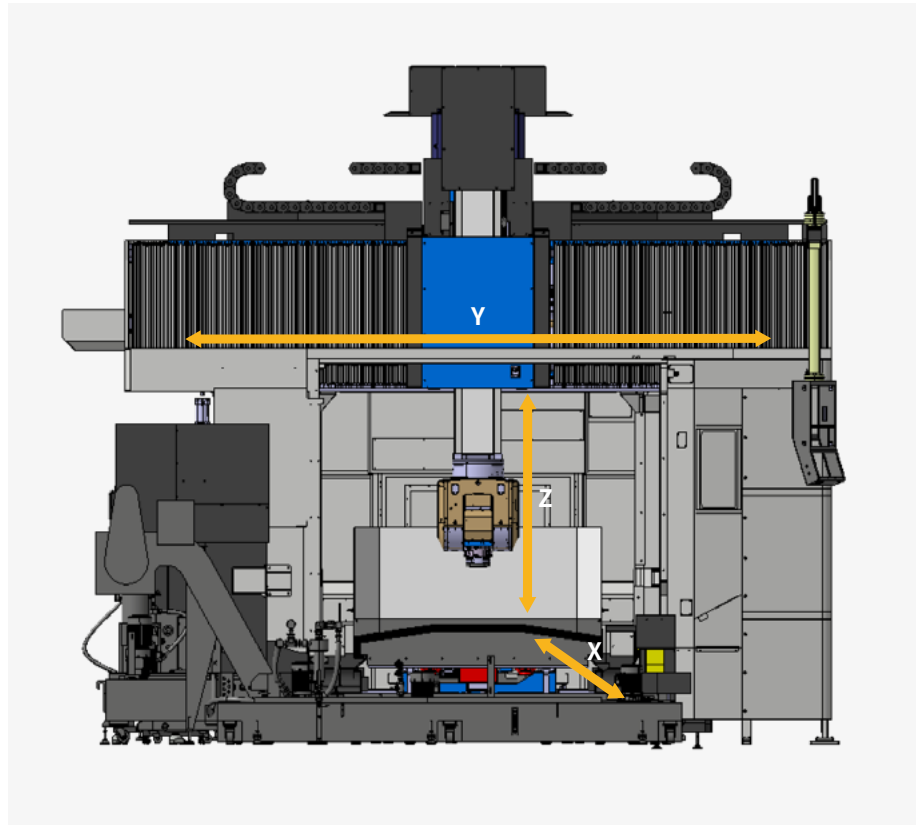
**3250 / 4250 / 5250** mm  
(128.0 / 167.3 / 206.7 inch)

### Y-axis

**2500 / 3000 / 3500** mm  
(98.4 / 118.1 / 137.8 inch)

### Z-axis

**1000** mm  
(39.4 inch)



## Feed axis construction

Equipped with roller LM guideways for increased rigidity, and a cooling system supplied as standard to minimize thermal displacement of X/Y/Z axes.

### Rapid traverse

DBM 2030 / 2040

X/Y-axis **24** m/min (944.9 ipm)

Z-axis **15** m/min (590.6 ipm)

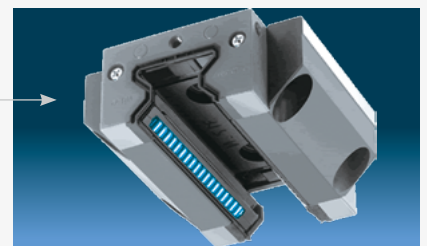
DBM 2540 / 2550 / 3050

X/Y-axis **20** m/min (787.4 ipm)

Z-axis **15** m/min (590.6 ipm)

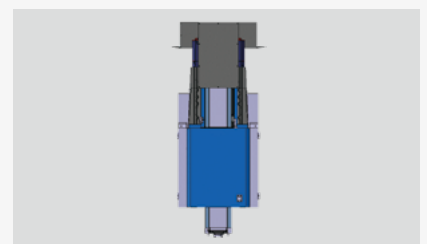
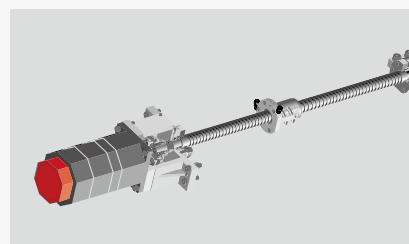
### Cutting feedrate

X/Y/Z-axis **10000** mm/min  
(393.7 ipm)



### Stable and fast guideways

High-rigidity and high-precision roller-type LM guideways



### Cooling of ballscrew housing and dual Z-axis ballscrew

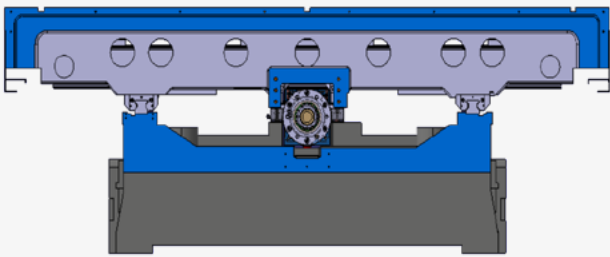
- Cooling minimizes thermal displacement on machine axes
- High-speed, high-accuracy control with Z-axis dual ballscrew

# HIGH-RIGIDITY, HIGH-PRECISION STRUCTURE

Designed for the long-term high-precision and heavy-duty machining of large workpieces.

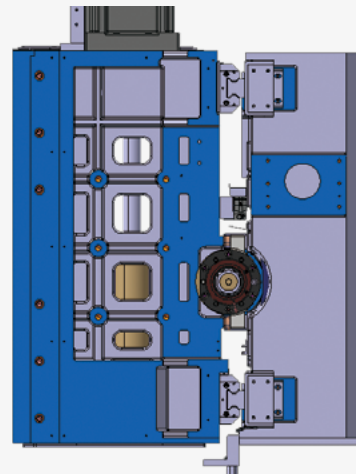
## Bed and column structure

- The structure of the DBM series minimizes the effects of vibration on workpieces when being machined. The machines' symmetrical design and rigid construction and the incorporation of effective thermal compensation systems reduces displacement during machining operations.
- The bed has a M-type cast structure - excellent for vibration absorption and for ensuring high precision machining.
- The table optimizes the spacing of support points so that it can support the weight of the workpiece well.



## Cross-beam structure

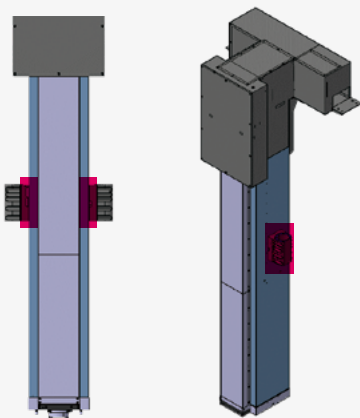
- The cross beam guideway has a L-shaped design for increased rigidity which ensures greater accuracy Y-axis travel(ram and saddle).



## Thermal compensation as standard

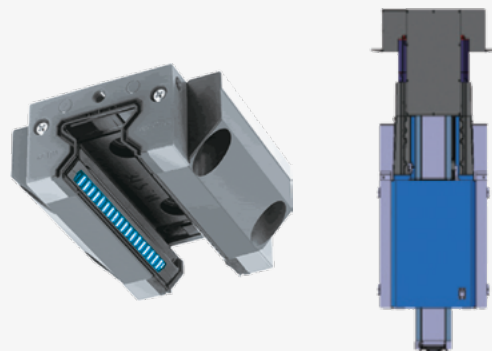
- Thermal compensation

Cooling of the Z-axis nut is provided as standard to prevent thermal impact on the ram spindle



## High rigidity precision travel system

- The roller guideways applied to the X, Y axes maintain high rigidity and excellent feed precision.
- The double ball screw applied to the Z-axis improves the straightness of the Z-axis and provides high-speed, high-precision control.
- Cooling function applied to ball screw support bearing as standard to minimize thermal displacement of shaft system.



# SPINDLE INFORMATION

High speed, High accuracy built in type universal head

Max. spindle speed

**15000** {30000 OPTION} r/min

Max. power

**45.9/34** kW (61.6/45.6 Hp)  
(15000 r/min)

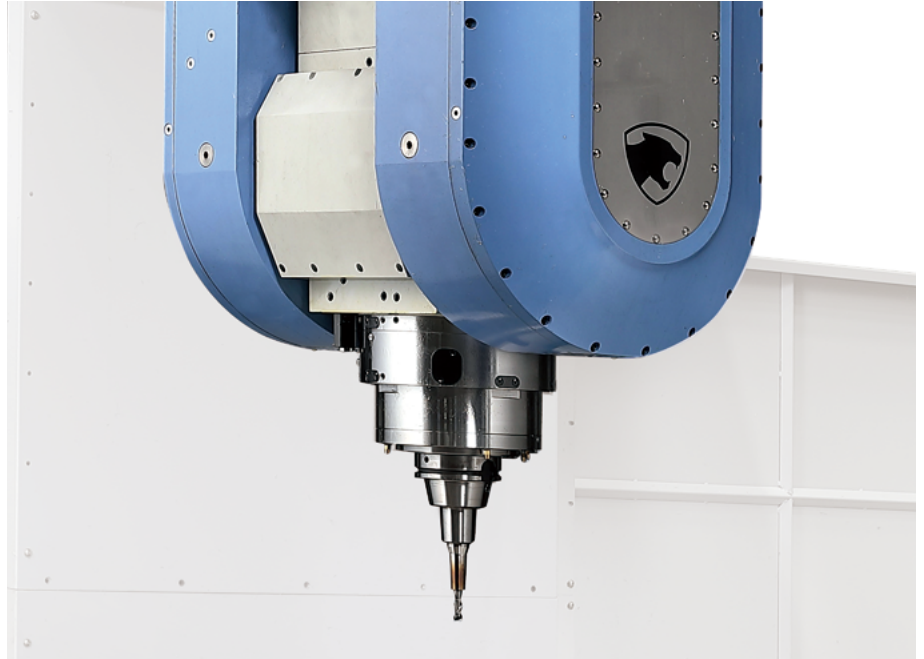
{82.4/58 kW (110.5/77.8 Hp)  
(30000 r/min) OPTION}

Max. torque

**146** N·m (107.7 ft-lbs)

{53.5 N·m (39.5 ft-lbs) OPTION}

• B/C axis 0.001° Continuous



## RAM HEAD

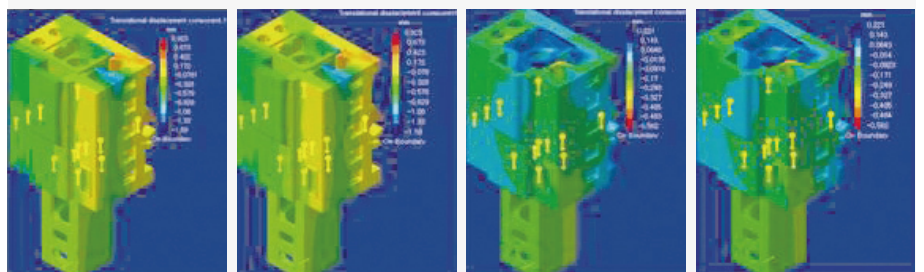
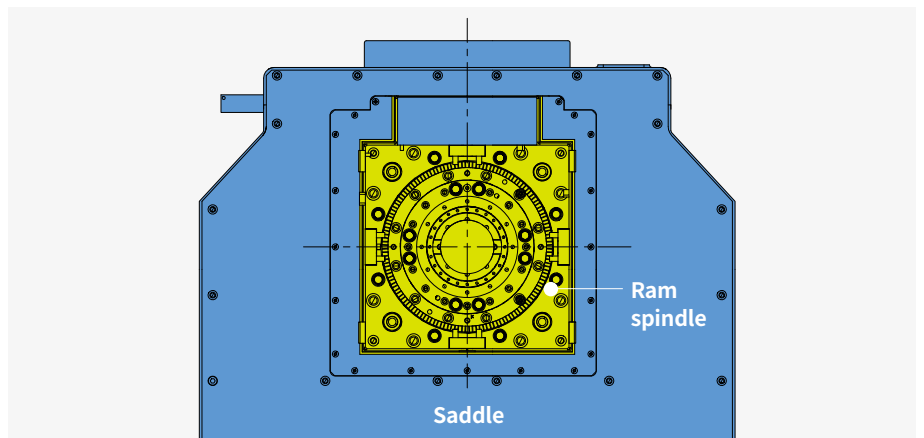
The highly-rigid, square-type box guideway ram has a cross section of 380 x 380mm (14.96 x 14.96 inch), which is the biggest in its class. This helps optimize the heavy-duty machining of both vertical and horizontal applications.

Ram size

**380 x 380** mm  
(15.0 inch x 15.0 inch)

### Stress analysis of ram

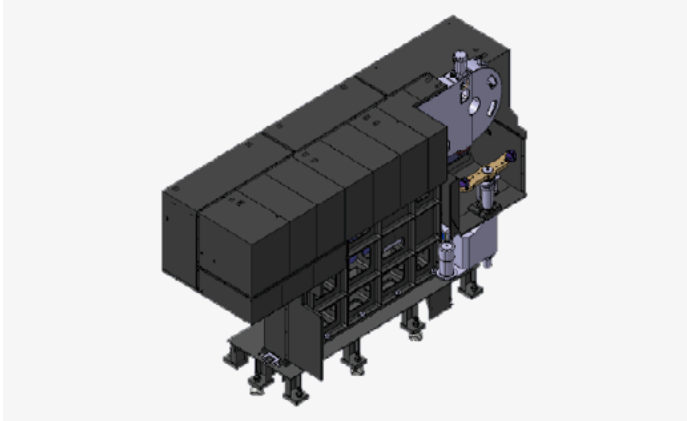
The ram, through using stress analysis techniques, has been designed to deliver high-performance under any load.



# AUTOMATIC TOOL CHANGER

## Automatic tool changer

With CAM type ATC, High productivity. High speed tool change can be realized.



<b>Tool type</b>	HSK-A100 / HSK-A63
<b>No. of tools</b>	60 ea
<b>Max. tool weight</b>	20(44.1) kg(lb) HSK-A100 / 8(17.6) kg(lb) HSK-A63
<b>Max. tool diameter (without adjacent tools)</b>	70(2.8) {120(4.7)} mm(inch) HSK-A63 / 125(4.9) {220(8.7)} mm(inch) HSK-A100
<b>Max. tool length</b>	300(11.8) mm(inch)
<b>Tool change time</b>	5 sec

## Automatic tool measurement OPTION

NC4      TS27R

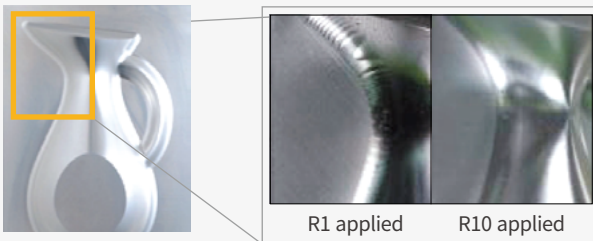
The length of tool set up in the spindle is measured automatically, and a specific tool's offset data is entered automatically.

## High accuracy

To maintain and manage precision performance, various functions are provided as standard.

### High-speed, high-precision contouring control

- AICC 1000 block + Machining condition selection function



Verification sample VASE

### Cutting condition selection function

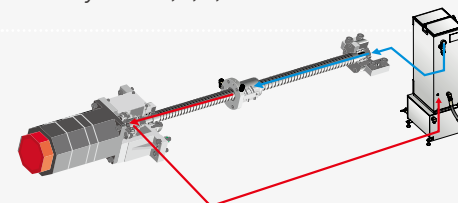
Cutting condition	R1	R2	R3	R4	R5	R6	R7	R8	R9	R10
Quality	Normal								Excellent	
Tool life	Long		←————→						Normal	
Application	High-speed roughing						High-precision finishing			

• Use the R code in the program to change the cutting conditions by up to 10 steps: improved productivity (high-speed roughing, high-precision finishing).  
 • Various servo-related NC parameters such as acceleration and deceleration, time constants and maximum cutting feed rates can be set automatically.



### X/Y/Z-axis linear scale feedback system

The linear scale feedback system provides high positioning accuracy in the X, Y, Z, and W axes.



### X/Y/Z-axis ballscrew shaft cooling OPTION

The heat generated in the ballscrew is removed by a high-efficiency cooler to minimize any thermal deformation. For fast removal of frictional heat, a hollow ballscrew shaft, allowing cooled oil to flow through it, is used.

# STANDARD | OPTIONAL SPECIFICATIONS

A range of options is available to suit individual requirements.


Division	Description	DBM-U series
Spindle	Universal head 15000r/min	45.9/34 kW, HSK-A100 ●
	Universal head 30000r/min	82.4/58 kW, HSK-A63 ○
ATC	Tool magazine	60 tools ●
Rotary table	PACKAGE #1 : ONLY WIRING	○
	PACKAGE #2 : HYD. & CONTROL READY	○
	PACKAGE #3 : FULL OPT.	○
Coolant	Coolant Tank	1600L+500L ●
	Flood Coolant	1.1 kW ●
	Flushing Coolant	1.1 kW ●
	Coolant gun	●
	Coolant level switch:	Sensing level - High/Low ●
	Oil skimmer	BELT TYPE ○
	TSC / CYLCONE FILTER	1.5 kw_2.0 Mpa ● 2.9 kw_3.0 Mpa ○ 7.5 kw_7.0 Mpa ○
Chip disposal	Lift-up chip conveyor	HINGED PLATE ● MAGNETIC SCRAPER ○ Scrapper type with Drum filter ○
	2 side chip conveyor	HINGED PLATE ●
	Belows cover	Y-axis ●
	Slide cover	X-axis ●
	Chip & coolant protect cover	Full splash guard ●
	Chip bucket	Rotating (380L) ○ Lift type (380L) ○
	AIR PURGE	●
	AIR CURTAIN	●
	AIR GUN	○
	AIR DRYER	○
Precision machining option	Spindle Bearing Housing Cooling	●
	Aaxis Bearing Housing Cooling	X / Y/ Z axis ●
	Aaxis Ballscrew Shaft Cooling	X / Y/ Z axis ○
	Spindle thermal compensation	●
	Linear scale	X / Y/ Z axis ●
	BZ sensor for CS contouring control	●
	Water Chiller for U-head cooling	●
	DIKC(DN Intelligent Kinematic Compensation)	DIKC S/W ● Datum Ball(D25) ●
	AICC II 1000 BLOCK	●
DATA SERVER: 1GB, 2GB, 4GB	○	
Measurement & automation	Automatic tool length measurement	TS27R_RENISHAW ○ NC4_RENISHAW ○
	Automatic workpiece measurement	RMP600_RENISHAW ●
	Automatic workpiece measuring MASTER TOOL	CALIBRATION BLOCK ●
	Auto power on	○
	Auto power off	●
Accessories	Electric cabinet extra light	○
	Air conditioner for electric box	●
	Work light	LED lamps : 4EA ●
	Operator call lamp	●
	Components for installation	leveling blocks and anchoring bolts ● Installation tool kit ●
Components for maintenance	Maintenance tool kit ○	
Easy convenient functions	Tool management	○
	Work load balance active control	●
	Cutting load monitoring	●
	Periodic check function	●
	Control box (PENDANT TYPE)	POLE TYPE ● PORTABLE TYPE 1-MPG ●
	MPG	MPG WITH LCD DISPLAY ○ PORTABLE TYPE 3-MPG ○ HMOP(Handy Machine Operator's Panel) ○
Installation type	UNDER GROUND	FL-960 INSTALL (TABLE TOP_FL0) ●
	GROUND	FLO INSTALL (TABLE TOP_FL+960) ○
Customized special option	Mist collector	○
	Water soluble Coolant Chiller**	○

\* Please contact DN Solutions for detailed specification information.

\* When using a semi-synthetic type or synthetic type, contact our sales representative or service center in advance.

\*\* Technical consultation is mandatory for the chilling of non-water soluble coolant

● Standard ○ Optional X Not applicable

 Fire Safety | There is a high risk of fire when using non-water-soluble cutting fluids, processing flammable materials, neglecting the controlled and careful use of coolants and modifying the machine without the consent of the manufacturer. Always check the SAFETY GUIDELINES carefully before using the machine.

# PERIPHERAL EQUIPMENT

## Improved operator convenience

Left-right-up-down and pull-type pendant arm operation panel.

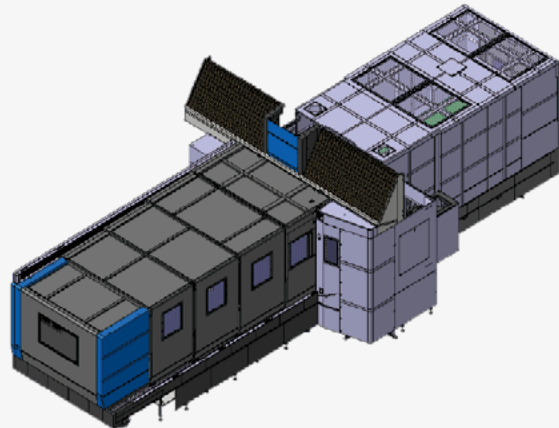
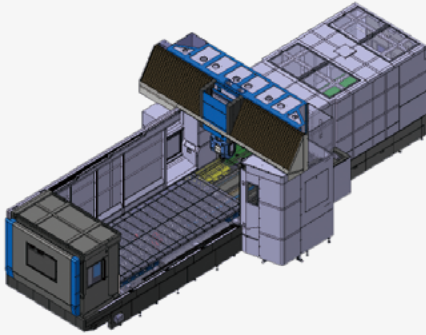


- The pulse handle and manual handle (portable MPG) etc., enable easy job setups can be supplied as a standard feature or as an option.

Hinged Belt	Magnetic Scrapper <small>OPTION</small>
 <p>Portable type 1 MPG</p>	 <p>Portable type 3 MPG</p>
Drum Filter (Single type) <small>OPTION</small>	Drum Filter (Double type) <small>OPTION</small>
 <p>MPG with LCD display</p>	 <p>HMOP (Handy Machine Operator's Panel)</p>

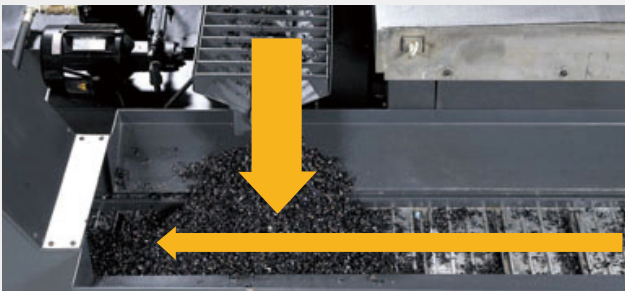
## Full splash guard

The Full splash-guard covers the entire cutting area to prevent chips and coolant from flying off during machining operations.



## Chip conveyor

Optional chip conveyors are available to evacuate discharged chips and to prevent chips and coolant from falling on the floor.



### Lift-up chip conveyor

- ※ The hinged-plate chip conveyor and the magnetic scraper chip conveyor are available as options.
- ※ The discharge direction can be selected - forward or backward. However, the DBM 2030, 2040 only has a forward discharge direction.

## Chip bucket OPTION

### Forklift type

The bottom of the chip bucket has a space into which forks can be inserted to allow forklift transportation.

### Rotation type

The chip bucket is fitted with a rotating joint that allows it to be tilted and emptied quickly.



# FANUC 31iB5 PLUS

Fanuc 31i Plus maximizes customer productivity and convenience.

## 15" Touch screen + New OP

DN Solutions Fanuc 31iB/B5 Plus' operation panel enhances operating convenience by incorporating common-design buttons and layout. It features a Qwerty keyboard for fast and easy data input and operation.

## FANUC 31iB5 PLUS

- 15-inch color display
- Intuitive and user-friendly design

## USB and PCMCIA card QWERTY keyboard

- EZ-Guide i standard
- Ergonomic operator panel
- 4MB Memory
- Hot keys
- Enhance AICC BLOCK
- Touch pen provided as standard



## iHMI touchscreen

iHMI provides an intuitive interface that uses a touchscreen for quick and easy operation.

## Range of applications

Providing various applications related to planning, machining, improvement and utility, for customer convenience.



## NUMERIC CONTROL SPECIFICATIONS



Item	Specifications	F31i-B5 Plus
		DBM -U series 5 (X,Y,Z,B,C)
Controlled axis	Controlled axes	
	Simultaneously controlled axes	5 axes
Data input/output	Additional controlled Axis	●
	data server	○
	Memory card input/output	●
	USB memory input/output	●
Interface function	Large capacity memory(2GB) <sup>*2)</sup>	Available Option only with 15" Touch LCD (iHMI Only) <sup>*2)</sup>
	Embedded Ethernet	●
	Fast Ethernet	○
Operation	Enhanced Embedded Ethernet function	●
	DNC operation	Included in RS232C interface.
	DNC operation with memory card	●
Program input	Workpiece coordinate system	G52 - G59
	Addition of workpiece coordinate system	G54.1 P1 X 48 (48 pairs)
	Tool number command	●
Feed function	Tilted working plane indexing command	G68.2 TWP
	AI contour control II	G5.1 Q_, 1000 Blocks <sup>*1)</sup>
	High smooth TCP	●
Operation Guidance Function	EZ Guidei (Conversational Programming Solution)	●
	iHMI with Machining Cycle	Only with 15" Touch LCD standard <sup>*2)</sup>
	EZ Operation package	●
Setting and display	CNC screen dual display function	●
		●
Network	FANUC MTConnect	⊕
	FANUC OPC UA	⊕
Others	Display unit	15" color LCD with Touch Panel
		10240M(4MB)_1000 programs
		20480M(8MB)_1000 programs
	Part program storage size & Number of registerable programs	2560M(1MB)_2000 programs
		5120M(2MB)_4000 programs
		10240M(4MB)_4000 programs
	20480M(8MB)_4000 programs	

\*1) The number of look-ahead blocks may be changed or limited depending on the peripheral device or the configuration of the internal NC system.

\*2) Available Option only with Fanuc i plus iHMI

● Standard ○ Optional X Not applicable ⊕ Available  
Network: FANUC MTConnect and FANUC OPC UA available.

# CONVENIENT MACHINING

## Work load counter control

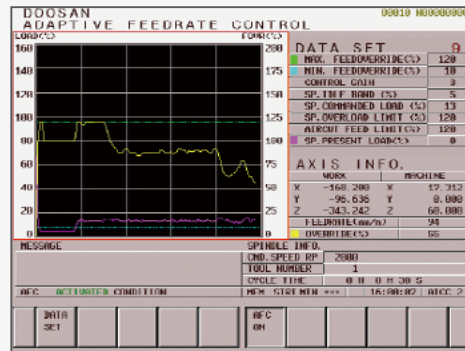
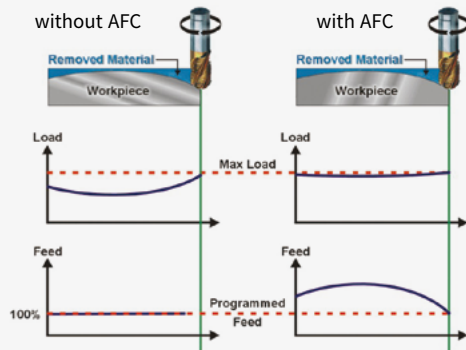
By selecting the appropriate M-Code according to the weight of the workpiece, the machine automatically decides the most effective and efficient moving pattern of the table.



M-Code	Weight of work piece	DBM 2540U	DBM 2550U
M380	5 tons(11023.0 lb) or less	●	●
M381	10 tons(22045.9 lb) or less	●	●
M382	15 tons(33068.9 lb) or less	●	●
M383	20 tons(44091.8 lb) or less	●	●

## Adaptive feedrate control(AFC)

If tool overload is detected during operation, the feed rate is controlled to prevent the tool from being damaged.



## Process monitoring function and manual operation screen

In-process monitoring minimizes the risk of damage to the workpiece during cutting operations.

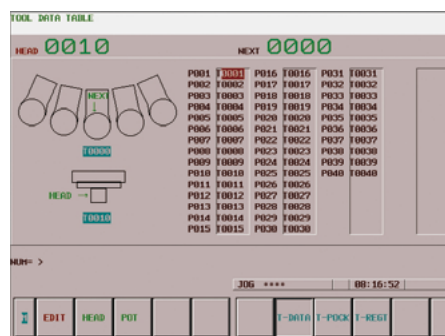
### Tool load monitoring

During cutting operations, abnormal loads caused by wear and tear of the tool are detected, and an alarm is triggered to prevent further damage from occurring.

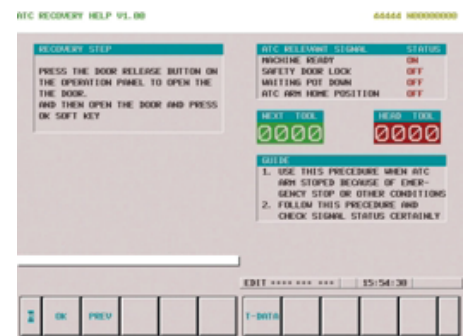


### Tool management OPTION

This function controls information on the tools in the tool magazine pots.



### ATC manual operation screen



# POWER | TORQUE

## 15000 r/min

SPEED

**15000** r/min

POWER

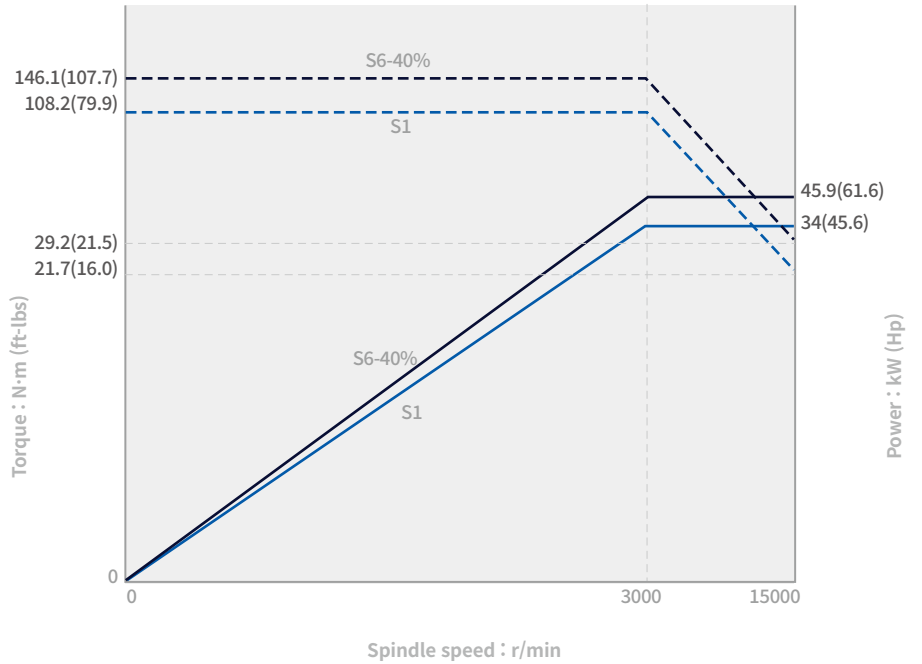
**45.9/34** kW (61.6/45.6 Hp)

TORQUE

**146** N·m (107.7 ft-lbs)

TOOL

**HSK-A100**



## 30000 r/min OPTION

SPEED

**30000** r/min

POWER

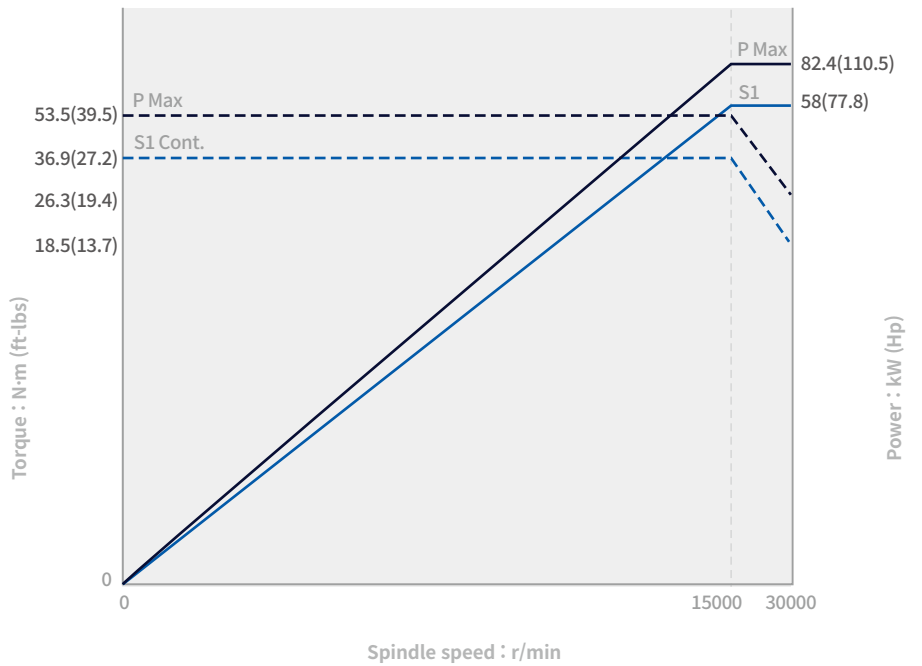
**82.4/58** kW (110.5/77.8 Hp)

TORQUE

**53.5** N·m (39.5 ft-lbs)

TOOL

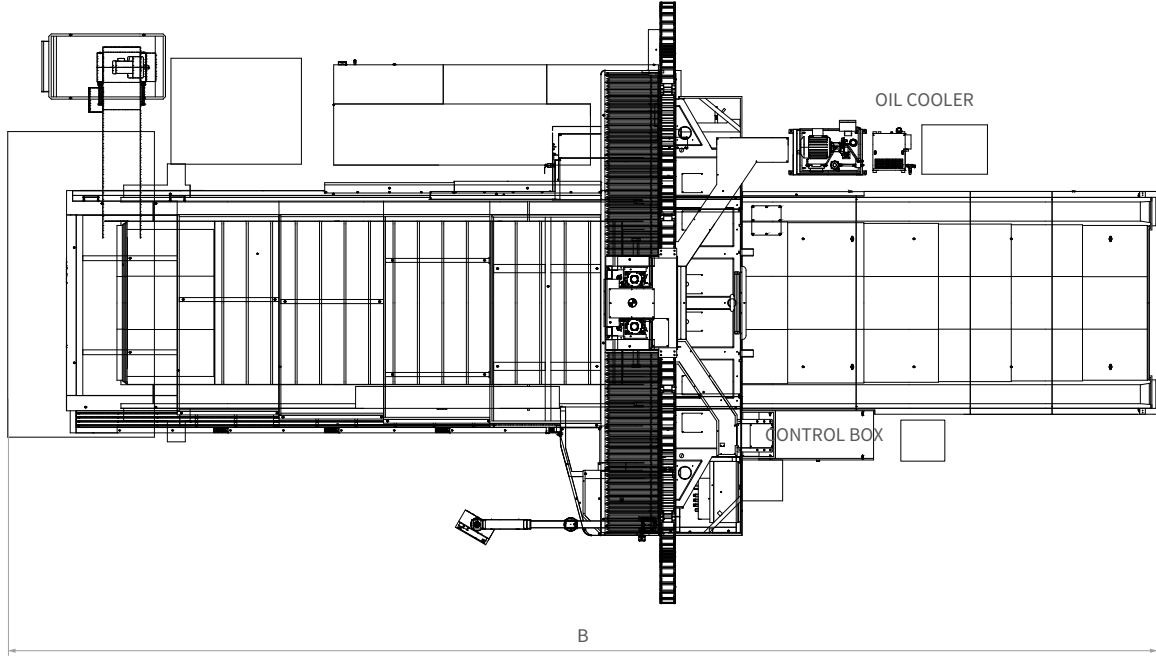
**HSK-A63**



# DIMENSIONS

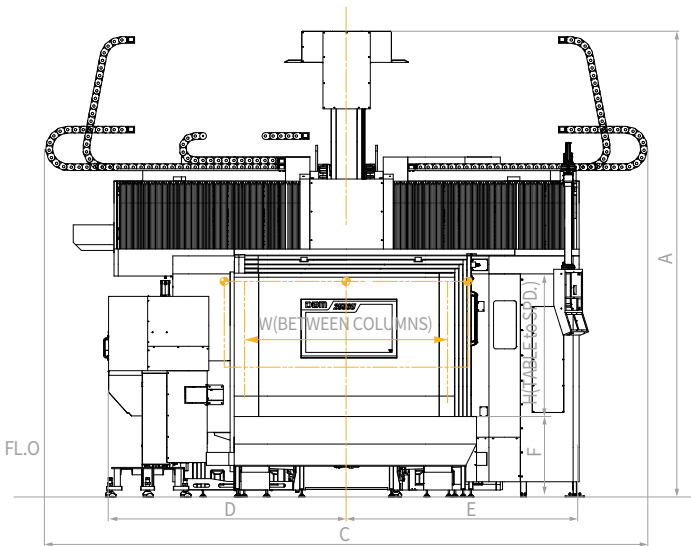
TOP

Units : mm (inch)



FRONT

SIDE



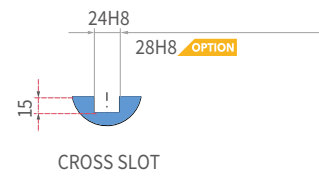
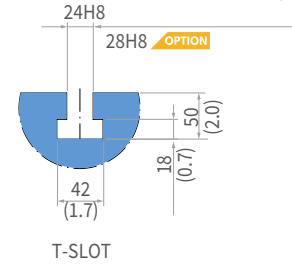
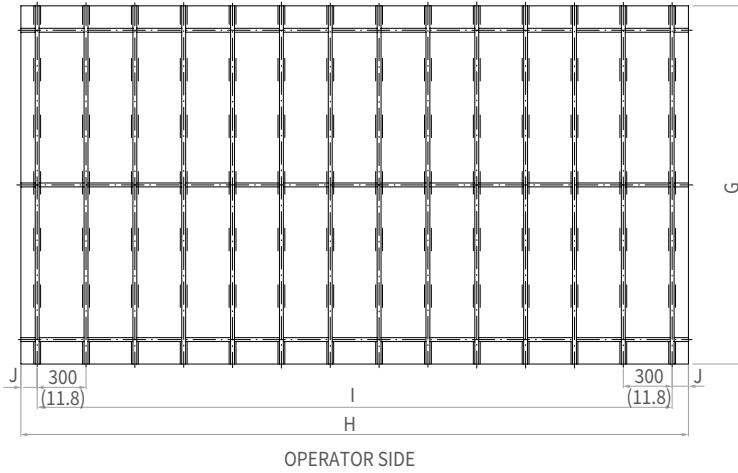
\* Some peripheral equipment can be placed in other areas.

Model		A	B	C	D	E	F	H	W
<b>DBM2030U</b>	STD (Z1000)	5810 (228.7)	10100 (397.6)	6930 (272.8)	2670 (105.1)	2602 (102.4)	960 (37.8)	900{960} (35.4{37.8})	2000 (78.7)
<b>DBM2040U</b>	STD (Z1000)	5810 (228.7)	12100 (476.4)	6930 (272.8)	2670 (105.1)	2602 (102.4)	960 (37.8)	900{960} (35.4{37.8})	2000 (78.7)
<b>DBM2540U</b>	STD (Z1000)	5810 (228.7)	12100 (476.4)	7430 (292.5)	2920 (115.0)	2852 (112.3)	960 (37.8)	900{960} (35.4{37.8})	2500 (98.4)
<b>DBM2550U</b>	STD (Z1000)	5810 (228.7)	14100 (555.1)	7430 (292.5)	2920 (115.0)	2852 (112.3)	960 (37.8)	900{960} (35.4{37.8})	2500 (98.4)
<b>DBM3050U</b>	STD (Z1000)	5810 (228.7)	14100 (555.1)	8600 (338.6)	3170 (124.8)	3102 (122.1)	960 (37.8)	900{960} (35.4{37.8}) 15K(30K)	3000 (118.1)

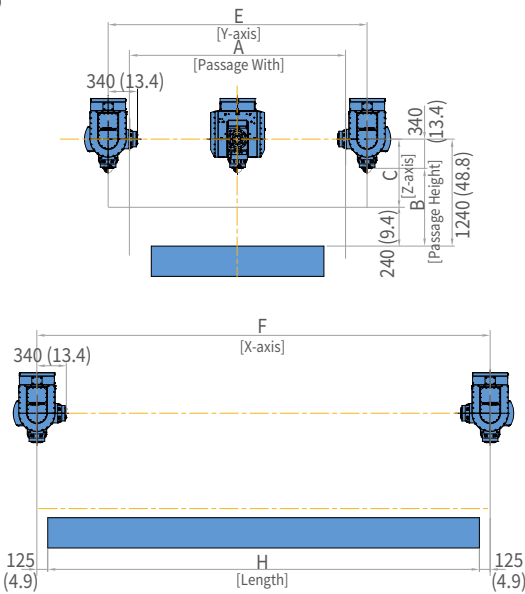
※ The dimensions above are the standard type for each model.

# WORK AREA AND TABLE DIMENSIONS

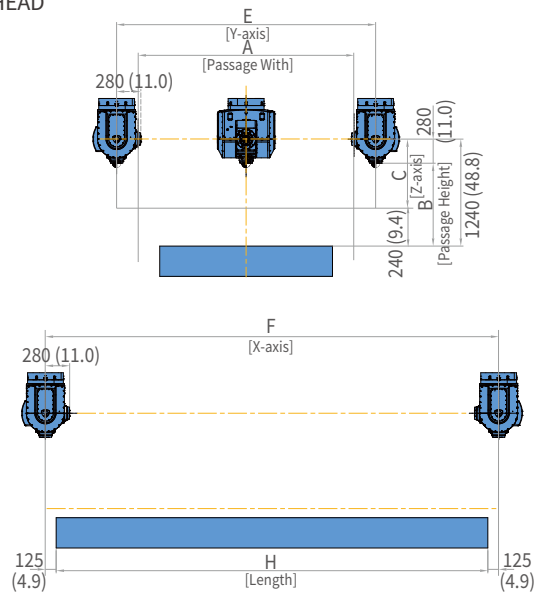
Units : mm (inch)



15K HEAD



30K HEAD



MODEL	TABLE TYPE	A	B	C	E	F	G	H	I	J
DBM2030U	15 X 30	2000 (78.7)	900{960} (35.4{37.8})	1000 (39.4)	2500 (98.4)	3250 (128.0)	1500 (59.1)	3000 (118.1)	2700 (106.3)	150 (5.9)
DBM2040U	15 X 40	2000 (78.7)	900{960} (35.4{37.8})	1000 (39.4)	2500 (98.4)	4250 (167.3)	1500 (59.1)	4000 (157.5)	3600 (141.7)	200 (7.9)
DBM2540U	20 X 40	2500 (98.4)	900{960} (35.4{37.8})	1000 (39.4)	3000 (118.1)	4250 (167.3)	2000 (78.7)	4000 (157.5)	3600 (141.7)	200 (7.9)
DBM2550U	20 X 50	2500 (98.4)	900{960} (35.4{37.8})	1000 (39.4)	3000 (118.1)	5250 (206.7)	2000 (78.7)	5000 (196.9)	4800 (189.0)	100 (3.9)
DBM3050U	25 X 50	3000 (118.1)	900{960} (35.4{37.8})	1000 (39.4)	3500 (137.8)	5250 (206.7)	2500 (98.4)	5000 (196.9)	4800 (189.0)	100 (3.9)

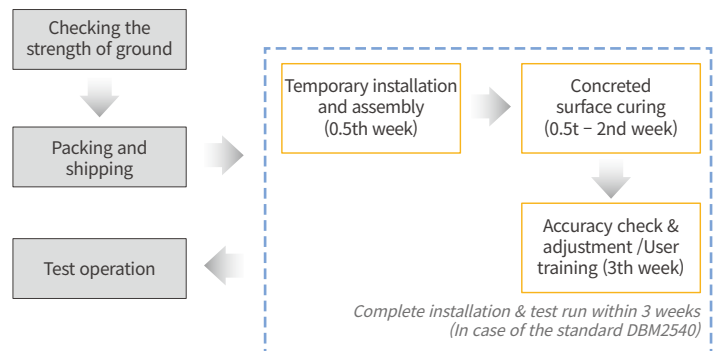
{ } option

Installation precautions

1. Test for bearing capacity of soil should be taken more than four areas. (In particular, places for bed and column where the loads are concentrated must be tested.)
2. Basically, the bearing capacity of soil should exceed the values determined by DN Solutions. (Test for bearing capacity of soil should follow DN Solutions's standards.)
3. Our engineering team may be available even during the foundation work at customer's request.
4. Please comply with our company's installation guideline, such as ground condition and anchoring, in order to achieve the maximum precision and performance of the machine.

Installation & test run

On-site installation and commissioning will be conducted according to a '5-week' schedule. [Excluding the concreted surface curing period (3rd week)]



\* The installation plan may vary according to the size of the machine, optional devices, and the conditions and environment of the site.

# MACHINE SPECIFICATIONS

Item	Unit	DBM 2030U	DBM 2040U	DBM 2540U	DBM 2550U	DBM 3050U	
Travel	X axis	mm (inch)	3250 (128.0)	4250 (167.3)	5250 (206.7)		
	Y axis [ATC]	mm (inch)	2500 [+200] (98.4 [+7.9])		3000 [+200] (118.1 [+7.9])	3500 [+200] (137.8 [+7.9])	
	Z axis	mm (inch)	1000 (39.4)				
	Effective width between columns	mm (inch)	2000 (78.7)		2500 (98.4)	3000 (118.1)	
	Table to spindle nose	mm (inch)	900 {960} (35.4 {37.8})				
Feedrate	Rapid traverse (X, Y, Z)	m/min (ipm)	24/24/15 (944.9/944.9/590.6)		20/20/15 (787.4/787.4/590.6)		
	Max. cutting feedrate (X, Y, Z)	mm/min (ipm)	10000/10000/10000 (393.7/393.7/393.7)				
Table	Table Size (Width x Length)	mm (inch)	1500x3000 (59.1x118.1)	1500x4000 (59.1x157.5)	2000x4000 (78.7x118.1)	2000x5000 (78.7x196.9)	2500x5000 (98.4x196.9)
	Load Capacity	kg (lb)	15000 (33068.9)	17000 (37478.0)	20000 (44091.8)	25000 (55114.8)	28000 (61728.5)
	T-Slot	mm (inch)	24H <sub>8</sub> {28H <sub>8</sub> } (0.95H <sub>8</sub> {1.1H <sub>8</sub> })				
Spindle (U-head)	Ram size	mm (inch)	380 x 380 (15.0 x 15.0)				
	Max. spindle speed	r/min	15000 {30000}				
	Tool taper	-	HSK-A100 {HSK-A63}				
	Spindle drive moto (S6-40%/Cont. {P max/Cont.})	kW (Hp)	45.9/34 {82.4/58} (61.6/45.6 {110.5/77.8})				
	Max. spindle torque	N·m (ft-lbs)	146 {49.9} (107.7 {36.8})				
	Rotation angle	B axis	deg	±110			
		C axis	deg	±220			
Rotation speed	B axis	r/min	20				
	C axis	r/min	20				
ATC	Tool storage capacity	ea	60				
	Max. tool diameter	Continous	mm	125 {70} (4.9 {2.8})			
		Adjacent pots empty	mm	220 {120} (8.7 {4.7})			
	Max. tool length	mm (inch)	300 (11.8)				
	Max. tool weight	kg (lb)	20 {8} (44.1 {17.6})				
	Max. tool moment	N·m (ft-lbs)	22 (16.22) {5.88 (4.34)}				
Tool selection type		Random Type					
Machine size	Machine height	mm (inch)	5810 (228.7)				
	Floor space	mm (inch)	6950 x 12350 (273.6 x 486.2)	6950 x 14350 (273.6 x 565.0)	7450 x 14350 (293.3 x 565.0)	7450 x 16350 (293.3 x 643.7)	8600 x 16350 (338.6 x 643.7)
	Machine weight	kg (lb)	37000 (81569.8)	41000 (90388.2)	46000 (101411.1)	50000 (110229.5)	54000 (119047.9)

# WHY DN SOLUTIONS

The DN Solutions promise, MACHINE GREATNESS, has two important meanings. The first is simple: DN Solutions makes great machines. The second is a challenge to our end-users. With a product line that is this comprehensive, accurate and reliable, we equip our customers to machine greatness. The big question: *Why should you choose DN Solutions over other options?* Here's why...



## UNBEATABLE MACHINES

You won't find a more comprehensive range or a better combination of value, performance and reliability anywhere else.

## READILY AVAILABLE - ANYWHERE IN THE WORLD

Machining centres (including 5-axis machines), lathes, multi-tasking turning centres and mill-turn machines, and horizontal borers with best-in-class specifications are all available...ready to install.

## ROBUST PRODUCT LINE

We offer an impressive range of machine models and hundreds of configurations. Whatever your machining needs and requirements, there's a DN Solutions for you.

## EXPERT SERVICE

Our dedicated, experienced and knowledgeable team is totally committed to improving your productivity, growth and success.

# RESPONDING TO CUSTOMERS **ANYTIME, ANYWHERE**

## DN SOLUTIONS GLOBAL NETWORK

**66** COUNTRIES | **140** + SALES NETWORKS | **3** FACTORIES | **6** REGIONAL HQS



## CUSTOMER SUPPORT AND SERVICES

### WE'RE THERE FOR YOU WHENEVER YOU NEED US.

We help our customers operate at maximum efficiency by providing them with a range of tried, tested and trusted services - from pre-sales consultancy to post-sales support.



#### FIELD SERVICES

- On-site service
- Machine installation and testing
- Scheduled preventive maintenance
- Machine repair service



#### PARTS SUPPLY

- Supplying a wide range of original DN Solutions spare parts
- Parts repair service



#### TRAINING

- Programming, machine setup and operation
- Electrical and mechanical maintenance
- Applications engineering



#### TECHNICAL SUPPORT

- Supports machining methods and technology
- Responds to technical queries
- Provides technical consultancy

**Head Office**

19F, 10, Tongil-ro, Jung-gu, Seoul,  
Republic of Korea, 04527

Tel: +82-2-6972-0370  
Fax: +82-2-6972-0400

**DN Solutions America**

360 E State PKWY,  
Schaumburg, IL. 60173,  
United states

Tel: +1-315-265-7500

**DN Solutions Europe**

Emdener Strasse 24, D-41540  
Dormagen, Germany

Tel: +49-2133-5067-100  
Fax: +49-2133-5067-111

**DN Solutions India**

No.82, Jakkuar Village  
Yelahanka Hobil,  
Bangalore-560064

Tel: +91-80-2205-6900  
E-mail: [india@dncompany.com](mailto:india@dncompany.com)

**DN Solutions China**

Room 101,201,301,  
Building 39 Xinzhuan Highway  
No.258 Songjiang District  
China Shanghai (201612)

Tel: +86 21-5445-1155  
Fax: +86 21-6405-1472

**DN Solutions Vietnam**

M.O.R.E building 2F, 40A-40B Ut  
Tich Street, 04 Ward 04,  
District Tan Binh District,  
Ho Chi Minh City, Vietnam  
Tel: +84 28-7304-0163

**DN Solutions Mexico**

Avenida Parque Bicentenario  
#100 Nave M65L3-6,  
Fraccionamiento San Isidro  
Business Park,  
Santa Rosa Jauregui,  
Querétaro, México

E-mail: [efrain.figueroa@dncompany.com](mailto:efrain.figueroa@dncompany.com)

**Sales inquiry**

[sales@dncompany.com](mailto:sales@dncompany.com)